



CARDEN PARK

Please do not touch or climb on the sculptures, thank you!

# Artwork Adventure Trail



# Win

Share your adventure for the chance to WIN...

**A £200 CARDEN GIFT CARD**

Just take a photo next to one of our sculptures and share it on social media with #cardenpark

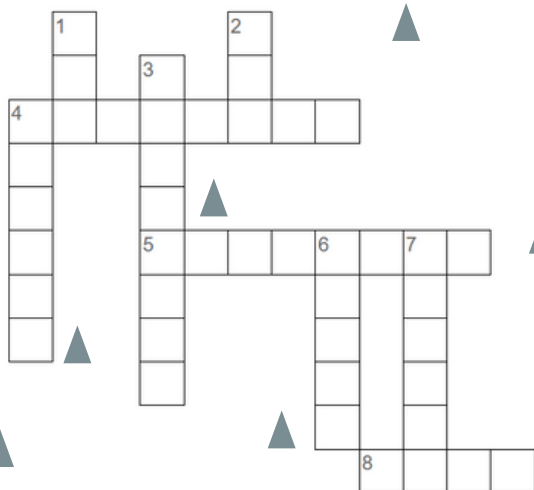
Full T&Cs at [cardenpark.co.uk](http://cardenpark.co.uk)



Artwork can be found all over the estate but you'll find the answers to the clues in either the sculpture **GARDEN** or the main corridor of the **HOTEL**

# Crossword

PTO for the clues!



Draw your favourite sculpture here

Colour in the circles when you've found each one and remember to scan the QR codes to learn more about the artwork. Our most expensive piece is £350,000 - can you find it?

**4 ACROSS**



Can you name the animal pictured above this sculpture? *Hint - find it close to the florist*

**HOTEL**

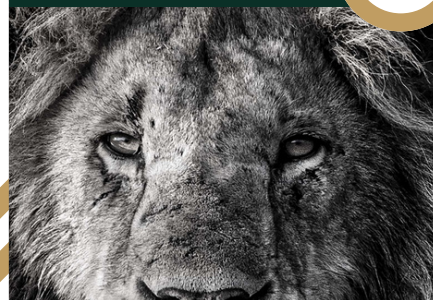
**4 DOWN**



What is the name of this adorable little mouse? *Hint - it's close to Goldie's Lounge*

**HOTEL**

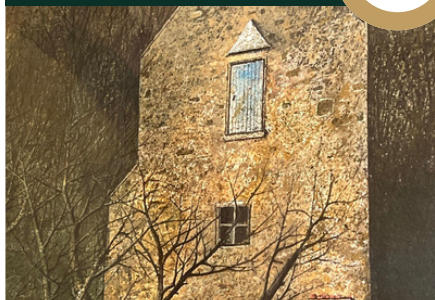
**5 ACROSS**



What is the first name of the artist who created this lion image? *Hint - it's near The Vines*

**HOTEL**

**6 DOWN**



What kind of fruit grows on trees in this painting? *Hint - you'll find it close to Redmond's Brasserie*

**HOTEL**

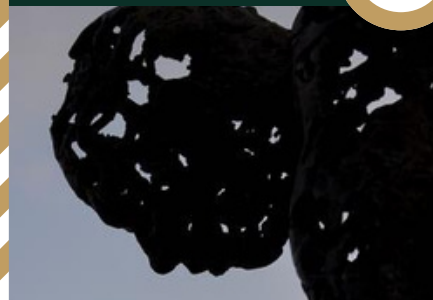
**7 DOWN**



What is the title of the gold sculpture visible through this hole?

**GARDEN**

**8 ACROSS**



What is this man holding in his hands?

**GARDEN**

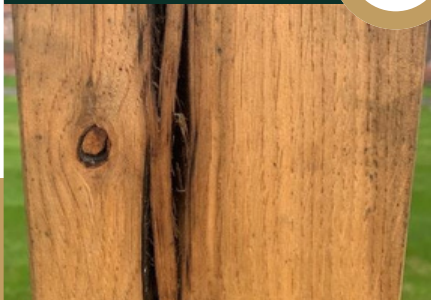
**3 DOWN**



What is the title of this yellow sculpture?

**GARDEN**

**1 DOWN**



Can you name the animal sitting on top of this plinth?

**GARDEN**

**2 DOWN**



How many spherical 'seeds' can you count in this Ian Marlow artwork?

**GARDEN**